

**Chimneypots**  
estate agents

51 Hamble Park Fleet End Road, Warsash, Southampton, Hampshire, SO31 9JU

**Price on Application**





51 Hamble Park Fleet End Road, Warsash, Southampton, Hampshire, SO31 9JU

### Price on Application

- DETACHED PARK HOME
- SITUATED ON A GENEROUS PLOT
  - GAS CENTRAL HEATING
  - 12 MONTH ON-SITE LIVING
- 50+ SITE (RETIRED/ SEMI-RETIRED)
  - FOUR BEDROOMS
  - FULLY FITTED KITCHEN
  - PRIVATE GARDENS
  - VACANT POSSESSION



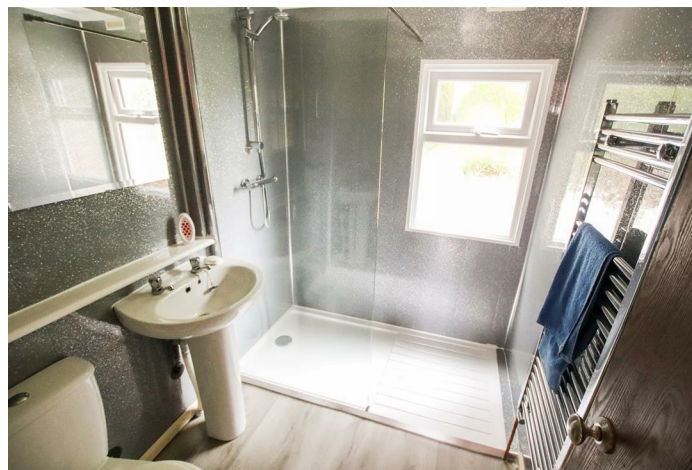
## Description

We are pleased to present to the market this well-presented four-bedroom chalet set on a generous plot situated within an ever desired and highly regarded site in Warsash.

Unlike many others, the property can be occupied throughout 12 months of the year and offers bright and spacious accommodation throughout which in brief comprises of a spacious entrance hall, where access is gained through to the lounge, which is of generous proportion. An opening leads you swiftly across to the fully fitted kitchen which enjoys French doors which perfectly frame the view of the rear garden. There are four bedrooms, two of those being doubles. Completing the internal accommodation is the shower room, with walk-in cubicle for added convenience.

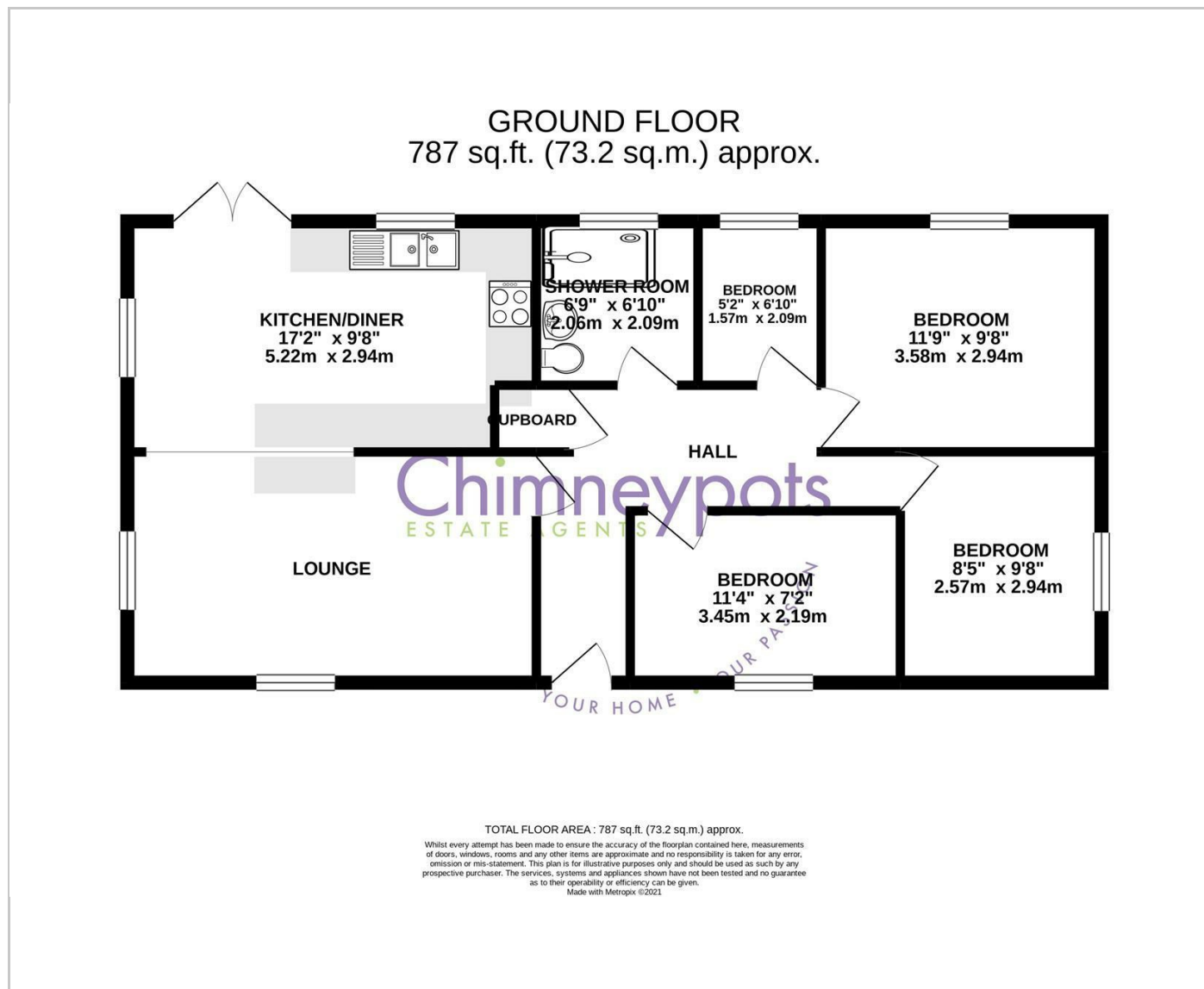
For those unfamiliar with the area, 'Warsash' which sits on the corner of the River Hamble and Solent shoreline. It offers local amenities, stunning walks and has pubs and restaurants nearby. In neighbouring Locks Heath there are more extensive shopping facilities which includes a Waitrose, library and community centre. There are also good bus links nearby and a short drive to Junction 9 of the M27 providing links to Portsmouth, Southampton and beyond.

Hamble park itself is aimed towards either the retired or semi-retired (50+). The property offers gas central heating, its own gardens and there is a site manager to ensure it continues to be well run and maintained.

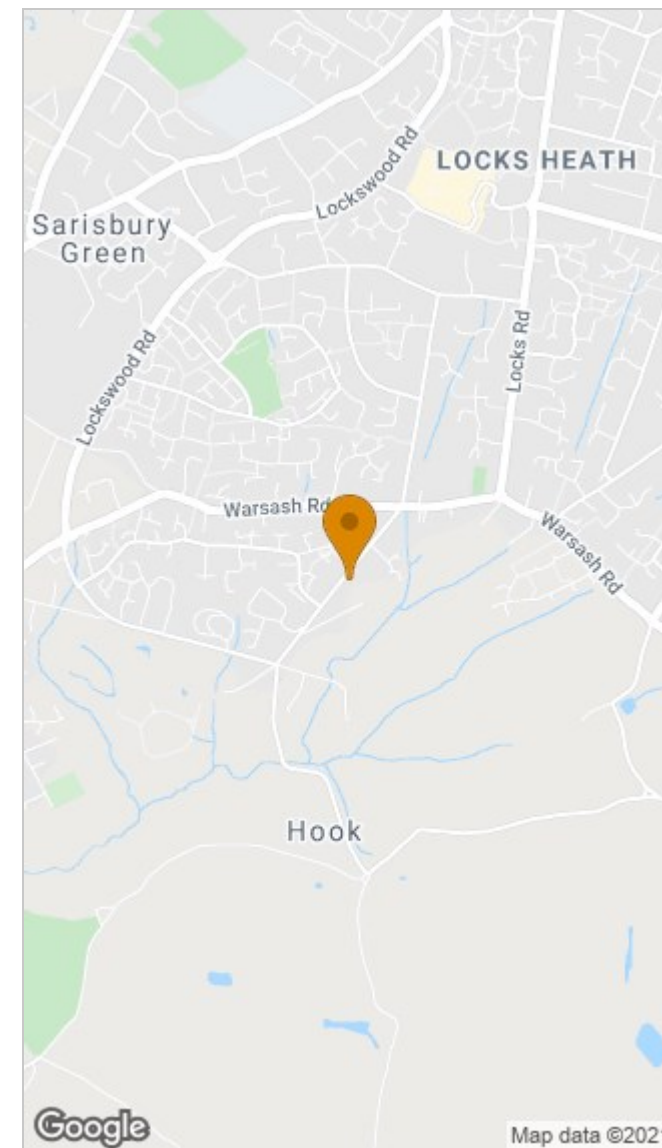




## Floor Plans



## Area Map



These particulars, whilst believed to be accurate are set out as a general outline only for guidance and do not constitute any part of an offer or contract. Intending purchasers should not rely on them as statements of representation of fact, but must satisfy themselves by inspection or otherwise as to their accuracy. No person in this firm's employment has the authority to make or give any representation or warranty in respect of the property.

Mariners Quay Shore Road, Warsash, Hampshire, SO31 9FR

Tel: 01489 584298 Email: [hello@chimneypotsestateagents.co.uk](mailto:hello@chimneypotsestateagents.co.uk) [www.chimneypotsestateagents.co.uk](http://www.chimneypotsestateagents.co.uk)